



# Money in a DSGE framework with an application to the Euro Zone

André Fourçans, Jonathan Benchimol

## ► To cite this version:

André Fourçans, Jonathan Benchimol. Money in a DSGE framework with an application to the Euro Zone. 2009. hal-00553495

**HAL Id: hal-00553495**

**<https://essec.hal.science/hal-00553495>**

Submitted on 7 Jan 2011

**HAL** is a multi-disciplinary open access archive for the deposit and dissemination of scientific research documents, whether they are published or not. The documents may come from teaching and research institutions in France or abroad, or from public or private research centers.

L'archive ouverte pluridisciplinaire **HAL**, est destinée au dépôt et à la diffusion de documents scientifiques de niveau recherche, publiés ou non, émanant des établissements d'enseignement et de recherche français ou étrangers, des laboratoires publics ou privés.

DR 09005

# CENTRE DE RECHERCHE

Beyond Education\*

## MONEY IN A DSGE FRAMEWORK WITH AN APPLICATION TO THE EURO ZONE

---

JONATHAN BENCHIMOL  
ANDRÉ FOURÇANS

SEPTEMBER 2009

# ESSEC

---

BUSINESS SCHOOL  
PARIS-SINGAPORE

*Il est interdit de reproduire ce document ou d'en citer des extraits  
sans l'autorisation écrite des auteurs.  
It is forbidden to quote all or part of this document without the written consent of the authors.*

- DR 09005 -

**MONEY IN A DSGE FRAMEWORK  
WITH AN APPLICATION TO THE EURO ZONE**

*Jonathan BENCHIMOL<sup>\*</sup> and André FOURÇANS<sup>†</sup>*

September 2009

---

<sup>\*</sup> Department of Economics, ESSEC Business School and CES-TEAM, University Paris 1 Panthéon-Sorbonne, 106-112 Boulevard de l'Hôpital, 75647 Paris cedex 13. Email address: [benchimol@essec.fr](mailto:benchimol@essec.fr)

<sup>†</sup> Department of Economics, ESSEC Business School, Avenue Bernard Hirsch, BP 50105, 95021 Cergy Cedex, France.  
Corresponding author: [fourcans@essec.fr](mailto:fourcans@essec.fr)

# MONEY IN A DSGE FRAMEWORK WITH AN APPLICATION TO THE EURO ZONE

## **ABSTRACT:**

In the current New Keynesian literature, the role of monetary aggregates is generally neglected. Yet it's hard to imagine money completely "passive" to the rest of the system. By entering real money balances in a non-separable utility function, we introduce an explicit role for money via preference redefinition in a simple New Keynesian Dynamic Stochastic General Equilibrium (DSGE) model. It involves new inflation and output gap specifications where money plays a significant role. We use the General Method of Moments (GMM) to calibrate our DSGE model of the Euro area and we show that the European Central Bank –ECB) should react more strongly to economic shocks as far as the role of money is found significant.

## **Key-Words:**

- ECB
- Inflation
- Monetary Policy
- Money

## **RÉSUMÉ :**

Le «nouveau keynésianisme» actuel néglige le rôle des agrégats monétaires dans la détermination de l'équilibre économique. On peut se poser des questions sur cette vision tant il est difficile d'admettre que la monnaie serait une variable «passive» du système économique. En introduisant les balances réelles dans une fonction d'utilité non-séparable, cet article incorpore explicitement le rôle de la monnaie dans un modèle du type DSGE. Cette spécification débouche sur des équations d'inflation et d'output gap dans lesquelles les encaisses monétaires jouent un rôle significatif. Le modèle DSGE est calibré par la General Method of Moments (GMM) appliqué aux données de la zone Euro. Les résultats et l'analyse démontrent que dans la mesure où la croissance monétaire joue un rôle significatif, la BCE devrait réagir plus vigoureusement aux chocs économiques qu'elle ne le fait généralement.

## **Mots-clés :**

- BCE
- Inflation
- Monnaie
- Politique monétaire

*JEL classification : E31, E51, E58*

# Money in a DSGE framework with an application to the Euro zone

Jonathan Benchimol\* and André Fourçans†

September 9, 2009

## Abstract

In the current New Keynesian literature, the role of monetary aggregates is generally neglected. Yet it's hard to imagine money completely "passive" to the rest of the system. By entering real money balances in a non-separable utility function, we introduce an explicit role for money via preference redefinition in a simple New Keynesian Dynamic Stochastic General Equilibrium (DSGE) model. It involves new inflation and output gap specifications where money plays a significant role. We use the General Method of Moments (GMM) to calibrate our DSGE model of the Euro area and we show that the European Central Bank (ECB) should react more strongly to economic shocks as far as the role of money is found significant.

*Keywords:* ECB, monetary policy, money, inflation.

*JEL Classification:* E31, E51, E58.

## 1 Introduction

Standard New Keynesian literature analyses monetary policy practically without reference to monetary aggregates. In this now traditional framework, monetary aggregates do not explicitly appear as an explanatory factor neither in the output gap or inflation dynamics nor in interest rate determination. Inflation is explained by the expected inflation rate and the output gap. In turn, the output gap depends mainly on its expectations and the real rate of interest (Clarida, Galí and Gertler, 1999; Woodford, 2003; Galí and Gertler, 2007; Galí, 2008). Finally, the interest rate is established via a traditional Taylor rule in function of the inflation gap and the output gap.

---

\*Department of Economics, ESSEC Business School and CES-TEAM, University Paris 1 Panthéon-Sorbonne, 106-112 Boulevard de l'Hôpital, 75647 Paris cedex 13. Email address: benchimol@essec.fr

†Department of Economics, ESSEC Business School, Avenue Bernard Hirsch, 95021 Cergy Pontoise Cedex 2, France. Corresponding author: fourcans@essec.fr

Following Woodford (2003) and Ireland (2004), money becomes an irrelevant variable in this framework. Yet, it is difficult to accept the view that money has no active role to play in the economy. Assenlacher-Wesche and Gerlach (2006) confirm that money growth contains information about inflation pressures. Money may play an informational role as to the state of different non observed (or difficult to observe) variables influencing inflation or output. In a New Keynesian framework, the expected inflation rate or the output gap may “hide” the role of monetary aggregates on inflation determination, for example. Nelson (2008) shows that standard New Keynesian models are built on the strange assumption that central banks can control the long-term interest rate, while this variable is actually determined by a Fisher equation in which expected inflation depends on monetary developments. Reynard (2007) found that in the U.S. and the Euro area, monetary developments provide qualitative and quantitative information as to inflation.

Kremer, Lombardo, and Werner (2003) find that real money balances contribute significantly to the determination of output (and inflation) dynamics. In that case, money could be an explanatory variable of the output gap. A recent contribution (Andrés, López-Salido and Nelson, 2009) introduces the role of money with adjustment costs for holding real balances. Empirical analysis confirms the importance of a forward-looking behavior of money demand. Stock and Watson (1989) and Feldstein and Stock (1993) find that money contributes to predicting the fluctuations in output not already predictable from past values of output, prices and interest rates. Nelson (2002) finds that money is a significant determinant of aggregate demand, both in the U.S. and in the U.K.

How is money introduced in these models ? Mainly through the assumption that the marginal utility of consumption depends on real money balances. The standard way is to resort to money-in-the-utility (MIU) function models, whereby real money balances are supposed to affect the marginal utility of consumption. Early evidence produced by Kremer, Lombardo, and Werner (2003) in the case of Germany supports the non-separability assumption. Subsequent studies, however, reach the opposite conclusion. The empirical work undertaken by Ireland (2004), Andrés, López-Salido, and Vallés (2006), and Jones and Stracca (2008) suggests that there is little evidence that supports the inclusion of real money balances in equations in the cases of the United States, the Euro zone, and the UK.

Few studies develop micro-foundations to introduce money into the models and fewer use New Keynesian models with a Dynamic Stochastic General Equilibrium (DSGE) approach. Our paper seeks to fill this gap. It introduces the role of money via preference redefinition. Contrary to Ireland (2004) or Andrés and *al.* (2009), we define a non time-separable utility function (CES), which is a good means to introduce money into a New Keynesian model. We use a DSGE simulation to examine the consequences of such an interpretation. Even if this method may not be the only one to study the role of money, we demonstrate that such a framework can set forth transmission mechanisms generally neglected in traditional New Keynesian analyses. It highlights in particular the importance of understanding the role of money to improve economic stability

and monetary policy.

The micro-foundations of our model of the economy leads to four dynamic equations explaining: the output gap, the inflation rate, money demand, and the short-term nominal interest rate. As the only major central bank that still claims to assign a significant role to monetary aggregates is the European Central Bank (ECB), it is interesting to conduct an empirical analysis that focuses on the Euro zone. We use the General Method of Moments to estimate our four equation system and to calibrate its parameters. The model so calibrated is used to simulate the behavior of the Euro zone economy. Dynamic analysis of the model, with impulse response functions following structural shocks, yields different relationships between money and other structural variables. It sheds light on the importance of money in explaining inflation and even short run fluctuations in output in the Euro zone.

## 2 The model

The model consists of households that supply labor, purchase goods for consumption, hold money and bonds, and firms that hire labor and produce and sell differentiated products in monopolistically competitive goods markets. Each firm sets the price of the good it produces, but not all firms reset their price in each period. Households and firms behave optimally: households maximize the expected present value of utility, and firms maximize profits. There is also a central bank that controls the nominal rate of interest. This model is inspired by Galí (2008), Walsh (2003) and Smets and Wouters (2003).

### 2.1 Households

We assume a representative infinitely-lived household, seeking to maximize

$$E_t \left[ \sum_{k=0}^{\infty} \beta^k U_{t+k} \right] \quad (1)$$

where  $U_t$  is the period utility function and  $\beta < 1$  is the discount factor.

We assume the existence of a continuum of goods represented by the interval  $[0, 1]$ . The household decides how to allocate its consumption expenditures among the different goods. This requires that the consumption index  $C_t$  be maximized for any given level of expenditures<sup>1</sup>. Furthermore, and conditional on such optimal behavior, the period budget constraint takes the form

$$P_t C_t + M_t + Q_t B_t \leq B_{t-1} + W_t N_t + M_{t-1} \quad (2)$$

for  $t = 0, 1, 2, \dots$ , where  $W_t$  is the nominal wage,  $P_t$  is an aggregate price index,  $N_t$  is hours of work (or the measure of household members employed),  $B_t$  is the quantity of one-period nominally riskless discount bonds purchased in period  $t$

---

<sup>1</sup>See Appendix 7.1

and maturing in period  $t + 1$  (each bond pays one unit of money at maturity and its price is  $Q_t$  where  $i_t = -\log Q_t$  is the short term nominal rate) and  $M_t$  is the quantity of money holdings at time  $t$ . The above sequence of period budget constraints is supplemented with a solvency condition<sup>2</sup>.

Preferences are measured with a CES utility function including real money balances. In the literature, utility functions are usually time-separable whereas in our model, the utility function is not time-separable. Under the assumption of a period utility given by

$$U_t = e^{\varepsilon_t^P} \left( \frac{1}{1-\sigma} \left( (1-b) C_t^{1-\nu} + b e^{\varepsilon_t^M} \left( \frac{M_t}{P_t} \right)^{1-\nu} \right)^{\frac{1-\sigma}{1-\nu}} - \frac{\chi e^{\varepsilon_t^N} N_t^{1+\eta}}{1+\eta} \right) \quad (3)$$

consumption, labor, money and bond holdings are chosen to maximize (1) subject to (2) and the solvency condition. This CES utility function depends positively on the consumption of goods,  $C_t$ , positively on real money balances,  $M_t/P_t$ , and negatively on labour  $N_t$ .  $\sigma$  is the coefficient of relative risk aversion of households (or the inverse of the intertemporal elasticity of substitution),  $\nu$  is the inverse of the elasticity of money holdings with respect to the interest rate, and  $\eta$  is the inverse of the elasticity of work effort with respect to the real wage. The utility function also contains three structural shocks:  $\varepsilon_t^P$  is a general shock to preferences that affects the intertemporal substitution of households (preference shock),  $\varepsilon_t^M$  is a money demand shock and  $\varepsilon_t^N$  is a shock to the number of hours worked. All structural shocks are assumed to follow a first-order autoregressive process with an *i.i.d.*-normal error term.  $b$  and  $\chi$  are positive scale parameters.

This setting leads to the following conditions, which, in addition to the budget constraint, must hold in equilibrium. The resulting log-linear version of the first order condition corresponding to the demand for contingent bonds implies that

$$\begin{aligned} \hat{c}_t = & E_t [\hat{c}_{t+1}] - \frac{1}{\nu - (\nu - \sigma) a_1} (\hat{i}_t - E_t [\hat{\pi}_{t+1}]) \\ & - \frac{(\nu - \sigma)(1 - a_1)}{\nu - (\nu - \sigma) a_1} (E_t [\Delta \hat{m}_{t+1}] - E_t [\hat{\pi}_{t+1}]) + \xi_{t,c} \end{aligned} \quad (4)$$

where  $\xi_{t,c} = -\frac{1}{\nu - (\nu - \sigma) a_1} \left( \frac{\nu - \sigma}{1 - \nu} \right) E_t [\Delta \hat{\varepsilon}_{t+1}^M] - \frac{1}{\nu - (\nu - \sigma) a_1} E_t [\Delta \hat{\varepsilon}_{t+1}^P]$ . The lower-case  $(\hat{\cdot})$  denotes the log-linearized (around the steady state) form of the original aggregated variables.

The demand for cash that follows from the household's optimization problem is given by

$$-\nu (\hat{m}_t - \hat{p}_t) + \nu \hat{c}_t + \hat{\varepsilon}_t^M = a_2 \hat{i}_t \quad (5)$$

where real cash holdings depend positively on consumption with an elasticity equal to unity and negatively on the nominal interest rate. In what follows we

---

<sup>2</sup>Such as  $\forall t \lim_{n \rightarrow \infty} E_t [B_n] \geq 0$ . It prevents from engaging in Ponzi-type schemes.



will take the nominal interest rate as the central bank's policy instrument. In the literature, due to the assumption that consumption and real money balances are additively separable in the utility function, cash holdings do not enter any of the other structural equations: accordingly, the above equation becomes recursive to the rest of the system of equations.

The first order condition corresponding to the optimal consumption-leisure arbitrage implies that

$$\eta \hat{n}_t + (\nu - (\nu - \sigma) a_1) \hat{c}_t - (\nu - \sigma) (1 - a_1) (\hat{m}_t - \hat{p}_t) + \xi_{t,n} = \hat{w}_t - \hat{p}_t \quad (6)$$

where  $\xi_{t,n} = \hat{\varepsilon}_t^N - (\nu - \sigma) (1 - \nu)^{-1} \hat{\varepsilon}_t^M$ .

Finally, these equations represent the Euler condition for the optimal intratemporal allocation of consumption (equation (4)), the intertemporal optimality condition setting the marginal rate of substitution between money and consumption equal to the opportunity cost of holding money (equation (5)), and the intratemporal optimality condition setting the marginal rate of substitution between leisure and consumption equal to the real wage<sup>3</sup> (equation (6)).

## 2.2 Firms

We assume a continuum of firms indexed by  $i \in [0, 1]$ . Each firm produces a differentiated good but uses an identical technology with the following production function<sup>4</sup>,

$$Y_t(i) = A_t N_t(i)^{1-\alpha} \quad (7)$$

where  $A_t$  is the level of technology, assumed to be common to all firms and to evolve exogenously over time.

All firms face an identical isoelastic demand schedule, and take the aggregate price level  $P_t$  and aggregate consumption index  $C_t$  as given. As in the standard Calvo (1983) model, our generalization features monopolistic competition and staggered price setting. At any time  $t$ , only a fraction  $1 - \theta$  of firms, with  $0 < \theta < 1$ , can reset their prices optimally, while the remaining firms index their prices to lagged inflation<sup>5</sup>.

## 2.3 Price dynamics

Let's assume a set of firms not reoptimizing their posted price in period  $t$ . Using the definition of the aggregate price level<sup>6</sup> and the fact that all firms resetting prices choose an identical price  $P_t^*$ , leads to  $P_t = \left[ \theta P_{t-1}^{1-\varepsilon} + (1 - \theta) (P_t^*)^{1-\varepsilon} \right]^{\frac{1}{1-\varepsilon}}$ . Dividing both sides by  $P_{t-1}$  and log-linearizing around  $P_t^* = P_{t-1}$  yields

$$\pi_t = (1 - \theta) (p_t^* - p_{t-1}) \quad (8)$$

---

<sup>3</sup>See Appendix 7.2

<sup>4</sup>For simplicity reasons, we assume a simple production function without capital.

<sup>5</sup>Thus, each period,  $1 - \theta$  producers reset their prices, while a fraction  $\theta$  keep their prices unchanged.

<sup>6</sup>As shown in Appendix 7.1

In this setup, inflation results from the fact that firms reoptimizing in any given period choose a price that differs from the economy's average price in the previous period.

## 2.4 Price setting

A firm reoptimizing in period  $t$  chooses the price  $P_t^*$  that maximizes the current market value of the profits generated while that price remains effective. This problem is solved and leads to a first-order Taylor expansion around the zero inflation steady state:

$$p_t^* - p_{t-1} = (1 - \beta\theta) \sum_{k=0}^{\infty} (\beta\theta)^k E_t [\widehat{mc}_{t+k|t} + (p_{t+k} - p_{t-1})] \quad (9)$$

where  $\widehat{mc}_{t+k|t} = mc_{t+k|t} - mc$  denotes the log deviation of marginal cost from its steady state value  $mc = -\mu$ , and  $\mu = \log(\varepsilon/(\varepsilon - 1))$  is the log of the desired gross markup.

## 2.5 Equilibrium

Market clearing in the goods market requires  $Y_t(i) = C_t(i)$  for all  $i \in [0, 1]$  and all  $t$ . Aggregate output is defined as  $Y_t = \left( \int_0^1 Y_t(i)^{1-\frac{1}{\varepsilon}} di \right)^{\frac{\varepsilon}{\varepsilon-1}}$ ; it follows that  $Y_t = C_t$  must hold for all  $t$ . One can combine the above goods market clearing condition with the consumer's Euler equation (4) to yield the equilibrium condition

$$\begin{aligned} \hat{y}_t &= E_t[\hat{y}_{t+1}] - \frac{1}{\nu + (\sigma - \nu)a_1} (\hat{\imath}_t - E_t[\hat{\pi}_{t+1}]) \\ &\quad + \frac{(\sigma - \nu)(1 - a_1)}{\nu + (\sigma - \nu)a_1} (E_t[\Delta \hat{m}_{t+1}] - E_t[\hat{\pi}_{t+1}]) + \xi_{t,c} \end{aligned} \quad (10)$$

Market clearing in the labor market requires  $N_t = \int_0^1 N_t(i) di$ . By using the production function (7) and taking logs, one can write the following approximate relation between aggregate output, employment and technology as

$$y_t = a_t + (1 - \alpha) n_t \quad (11)$$

An expression is derived for an individual firm's marginal cost in terms of the economy's average real marginal cost:

$$mc_t = (\hat{w}_t - \hat{p}_t) - \widehat{mpn}_t \quad (12)$$

$$= (\hat{w}_t - \hat{p}_t) - \frac{1}{1 - \alpha} (\hat{a}_t - \alpha \hat{y}_t) \quad (13)$$

for all  $t$ , where  $\widehat{mpn}_t$  defines the economy's average marginal product of labor. As  $mc_{t+k|t} = (\hat{w}_{t+k} - \hat{p}_{t+k}) - mpn_{t+k|t}$  we have

$$mc_{t+k|t} = mc_{t+k} - \frac{\alpha\varepsilon}{1 - \alpha} (p_t^* - p_{t+k}) \quad (14)$$

where the second equality<sup>7</sup> follows from the demand schedule combined with the market clearing condition  $c_t = y_t$ . Substituting (14) into (9) yields

$$p_t^* - p_{t-1} = (1 - \beta\theta) \Theta \sum_{k=0}^{\infty} (\beta\theta)^k E_t [\widehat{mc}_{t+k}] + \sum_{k=0}^{\infty} (\beta\theta)^k E_t [\pi_{t+k}] \quad (15)$$

where  $\Theta = (1 - \alpha)(1 - \alpha + \alpha\varepsilon)^{-1} \leq 1$ .

Finally, (8) and (15) yield the inflation equation

$$\pi_t = \beta E_t [\pi_{t+1}] + \lambda_{mc} \widehat{mc}_t \quad (16)$$

where  $\beta, \lambda_{mc} = \Theta((1 - \theta)\theta^{-1})(1 - \beta\theta)$ .  $\lambda_{mc}$  is strictly decreasing in the index of price stickiness  $\theta$ , in the measure of decreasing returns  $\alpha$ , and in the demand elasticity  $\varepsilon$ .

Next, a relation is derived between the economy's real marginal cost and a measure of aggregate economic activity. From (6) and (11), the average real marginal cost can be expressed as

$$\begin{aligned} mc_t = & \left( \nu - (\nu - \sigma) a_1 + \frac{\eta + \alpha}{1 - \alpha} \right) \hat{y}_t - \hat{a}_t \left( \frac{1 + \eta}{1 - \alpha} \right) \\ & + (\sigma - \nu)(1 - a_1)(\hat{m}_t - \hat{p}_t) + \xi_{t,n} \end{aligned} \quad (17)$$

Under flexible prices the real marginal cost is constant and equal to  $mc = -\mu$ . Defining the natural level of output, denoted by  $y_t^f$ , as the equilibrium level of output under flexible prices leads to

$$\begin{aligned} mc = & \left( \nu - (\nu - \sigma) a_1 + \frac{\eta + \alpha}{1 - \alpha} \right) \hat{y}_t^f - \hat{a}_t \left( \frac{1 + \eta}{1 - \alpha} \right) \\ & + \xi_{t,n}^f + (\sigma - \nu)(1 - a_1)(\hat{m}_t^f - \hat{p}_t^f) \end{aligned} \quad (18)$$

thus implying

$$\hat{y}_t^f = v_a^f \hat{a}_t + v_m^f (\hat{m}_t^f - \hat{p}_t^f) + v_0^f + v_t^f \quad (19)$$

where

$$\begin{aligned} v_a^f &= \frac{1 + \eta}{(\nu - (\nu - \sigma) a_1)(1 - \alpha) + \eta + \alpha} \\ v_m^f &= \frac{(1 - \alpha)(\nu - \sigma)(1 - a_1)}{(\nu - (\nu - \sigma) a_1)(1 - \alpha) + \eta + \alpha} \\ v_0^f &= \frac{-\mu(1 - \alpha)}{(\nu - (\nu - \sigma) a_1)(1 - \alpha) + \eta + \alpha} \\ v_t^f &= \frac{\alpha - 1}{(\nu - (\nu - \sigma) a_1)(1 - \alpha) + \eta + \alpha} \xi_{t,n}^f \end{aligned}$$

---

<sup>7</sup>Note that under the assumption of constant returns to scale ( $\alpha = 0$ ),  $mc_{t+k|t} = mc_{t+k}$ , i.e., the marginal cost is independent of the level of production and, hence, is common across firms.

As can be seen, the natural level of output depends on real money balances with flexible prices. In our model, when  $\mu = 0$  (perfect competition), the natural level of output doesn't correspond to the equilibrium level of output in the classical economy (perfect competition and fully flexible prices in all markets) due to the presence of money in the non-separable utility function. Firms market power has the effect of lowering that output level uniformly over time, without affecting its sensitivity to changes in technology.

Subtracting (18) from (17) yields

$$\widehat{mc}_t = \psi_x (\hat{y}_t - \hat{y}_t^f) + \psi_m (\hat{m}_t - \hat{p}_t) - (\hat{m}_t^f - \hat{p}_t^f) + \psi_t \quad (20)$$

where  $\psi_x = \nu - (\nu - \sigma)a_1 + (\eta + \alpha)(1 - \alpha)^{-1}$ ,  $\psi_m = (\sigma - \nu)(1 - a_1)$  and  $\psi_t = \xi_{t,n} - \xi_{t,n}^f$ .

By combining (20) with (16), and by taking first differences, we obtain

$$\hat{\pi}_t = \kappa_{\pi,+1} E_t [\hat{\pi}_{t+1}] + \kappa_{\pi,-1} \hat{\pi}_{t-1} + \kappa_x \Delta \hat{x}_t + \kappa_m \Delta \hat{m}_t + z_t^\pi \quad (21)$$

where  $\hat{x}_t = \hat{y}_t - \hat{y}_t^f$  is the output gap,  $\kappa_{\pi,+1} = \frac{\beta}{1+\beta+\lambda_{mc}\psi_m}$ ,  $\kappa_{\pi,-1} = \frac{1}{1+\beta+\lambda_{mc}\psi_m}$ ,  $\kappa_x = \frac{\lambda_{mc}\psi_x}{1+\beta+\lambda_{mc}\psi_m}$ ,  $\kappa_m = \frac{\lambda_{mc}\psi_m}{1+\beta+\lambda_{mc}\psi_m}$  and  $z_t^\pi = \frac{\lambda_{mc}(\psi_m \hat{\pi}_t^f - \psi_m \Delta \hat{m}_t^f + \Delta \psi_t)}{1+\beta+\lambda_{mc}\psi_m}$ .

Then (21) is our first equation relating inflation to its one period ahead forecast, its one period lag value, the first difference of the output gap and the money stock growth.

The second key equation describing the equilibrium of the model is obtained by rewriting (10) so as to determine the output gap

$$\hat{x}_t = E_t [\hat{x}_{t+1}] - \kappa_r (\hat{i}_t - E_t [\hat{\pi}_{t+1}]) + \kappa_{mp} (E_t [\Delta \hat{m}_{t+1}] - E_t [\hat{\pi}_{t+1}]) + z_t^x \quad (22)$$

where  $\kappa_r = \frac{1}{\nu - (\nu - \sigma)a_1}$ ,  $\kappa_{mp} = \frac{(\nu - \sigma)(1 - a_1)}{(\nu - \sigma)a_1 - \nu}$  and  $z_t^x = \xi_{t,c} + E_t [\Delta \hat{y}_{t+1}^f]$ . (22) is thus a dynamic IS equation including the money stock growth.

The third key equation describes the behavior of the money stock. Taking the first difference of (5) yields

$$\hat{m}_t = \hat{m}_{t-1} + \hat{\pi}_t + \Delta \hat{x}_t - \kappa_i \Delta \hat{i}_t + z_t^m \quad (23)$$

where  $\kappa_i = a_2/\nu$  and  $z_t^m = \nu^{-1} \Delta \hat{\varepsilon}_t^M - \Delta \hat{y}_t^f$ .

The last equation determines the interest rate through a standard smoothed Taylor-type rule:

$$\hat{i}_t = (1 - \lambda_i) (\lambda_\pi (\pi_t - \pi^*) + \lambda_x x_t) + \lambda_i \hat{i}_{t-1} + z_t^i \quad (24)$$

where  $\lambda_\pi$  and  $\lambda_x$  are policy coefficients reflecting the weight on inflation and on the output gap; the parameter  $0 < \lambda_i < 1$  captures the degree of interest rate smoothing.  $z_t^i$  is an exogenous *ad hoc* shock accounting for fluctuations of nominal interest rate such that  $z_t^i = \rho_i z_{t-1}^i + \varepsilon_{i,t}$  with  $\varepsilon_{i,t} \sim N(0; \sigma_i)$ . To simplify, we assume that the target inflation rate is equal to zero, i.e.  $\pi^* = 0$ . A decomposition of the above coefficients is provided in Appendix 7.3.

### 3 Calibrating the model

In our model of the Euro zone,  $\hat{\pi}_t$  is the log-linearized inflation rate measured as the 12-month increase in the Euro-area Harmonized Consumer Price Index (HCPI),  $\Delta\hat{m}_t$  is the log-linearized growth rate of the M3 monetary aggregate ( $\Delta\hat{m}_t = \hat{m}_t - \hat{m}_{t-1}$ ),  $\hat{x}_t$  is the Hodrick-Prescott (HP) trend of the log-linearized industrial output gap,  $i_t$  is the nominal interest rate and  $z_t^\pi, z_t^x, z_t^m, z_t^i$ , and  $\hat{a}_t$  are shocks, respectively, on the inflation rate, the output gap, money growth, the nominal interest rate and the technology. Structural shocks ( $\varepsilon_t^P, \varepsilon_t^N$ , and  $\varepsilon_t^M$ ), the exogenous component of the interest rate ( $\varepsilon_t^i$ ) and of the productivity ( $\varepsilon_t^a$ ) are assumed to follow a first-order autoregressive process with an *i.i.d.*-normal error term such as  $\varepsilon_t^k = \mu_k \varepsilon_{t-1}^k + \omega_{k,t}$  where  $\varepsilon_{k,t} \sim N(0; \sigma_k)$  for  $k = \{P, N, M, i, a\}$ .

We calibrate the model parameters by using the General Method of Moments<sup>8</sup> (GMM) to test our four equations (21), (22), (23) and (24). We obtain the following results:

$$\hat{\pi}_t = 0.489E_t[\hat{\pi}_{t+1}] + 0.494\hat{\pi}_{t-1} + 0.047\Delta\hat{x}_t + 0.108\Delta\hat{m}_t + z_t^\pi \quad (25)$$

$$\hat{x}_t = E_t[\hat{x}_{t+1}] - 0.013(\hat{i}_t - E_t[\hat{\pi}_{t+1}]) + 0.0021(E_t[\Delta\hat{m}_{t+1}] - E_t[\hat{\pi}_{t+1}]) + z_t^x \quad (26)$$

$$\hat{m}_t = \hat{m}_{t-1} + \hat{\pi}_t + \Delta\hat{x}_t - 0.44\Delta\hat{i}_t + z_t^m \quad (27)$$

$$\hat{i}_t = (1 - 0.53)(2.23\hat{\pi}_t + 0.82\hat{x}_t) + 0.53\hat{i}_{t-1} + z_t^i \quad (28)$$

### 4 DSGE Simulation

We simulate our model with the following shocks<sup>9</sup>:

$$\begin{aligned} z_t^\pi &= \frac{\lambda_{mc}}{1+\beta+\lambda_{mc}\psi_m} \left( \Delta\hat{\varepsilon}_t^N - \left( \frac{\nu-\sigma}{1-\nu} \right) \Delta\hat{\varepsilon}_t^M - \frac{\psi_m}{v_m^f} (\hat{r}_{t-1}^n - v_a^f \Delta\hat{a}_t) + tip_t \right) \\ z_t^x &= -\frac{1}{\nu+(\sigma-\nu)a_1} \left( \frac{\nu-\sigma}{1-\nu} \right) E_t[\Delta\hat{\varepsilon}_{t+1}^M] - \frac{1}{\nu+(\sigma-\nu)a_1} E_t[\Delta\hat{\varepsilon}_{t+1}^P] + \hat{r}_t^n \\ z_t^m &= \frac{1}{\nu} \Delta\hat{\varepsilon}_t^M - \hat{r}_{t-1}^n \\ z_t^i &= \rho_i z_{t-1}^i + \varepsilon_t^i \\ \hat{a}_t &= \rho_a \hat{a}_{t-1} + \varepsilon_t^a \end{aligned}$$

where  $tip_t$  are terms independents of policy containing all shocks in case of flexible prices.

It is assumed that structural shocks follow the process below:

<sup>8</sup>See Appendix 7.4 for the econometric analysis.

<sup>9</sup>See Appendix 7.5 for the decomposition of shocks.

$$\begin{aligned}
\hat{\varepsilon}_t^P &= 0.8\hat{\varepsilon}_{t-1}^P + \omega_{P,t} \\
\hat{\varepsilon}_t^N &= 0.8\hat{\varepsilon}_{t-1}^N + \omega_{N,t} \\
\hat{\varepsilon}_t^M &= 0.8\hat{\varepsilon}_{t-1}^M + \omega_{M,t} \\
\varepsilon_t^i &= 0.8\varepsilon_{t-1}^i + \omega_{i,t} \\
\varepsilon_t^a &= 0.8\varepsilon_{t-1}^a + \omega_{a,t}
\end{aligned}$$

where  $\omega_{P,t}$ ,  $\omega_{N,t}$ ,  $\omega_{M,t}$ ,  $\omega_{i,t}$  and  $\omega_{a,t}$  are *i.i.d.* shocks with variance of  $0.02^2$ . The model includes a common shock persistence of 0.8 as is usual in the DSGE literature. The impulse response functions in the diagrams below illustrate how the economy adjusts, i.e. how the disturbance causes each variable to move away from its steady state (zero line) and how it reverts back to it. The figures below illustrate the response of the system to a structural shock.

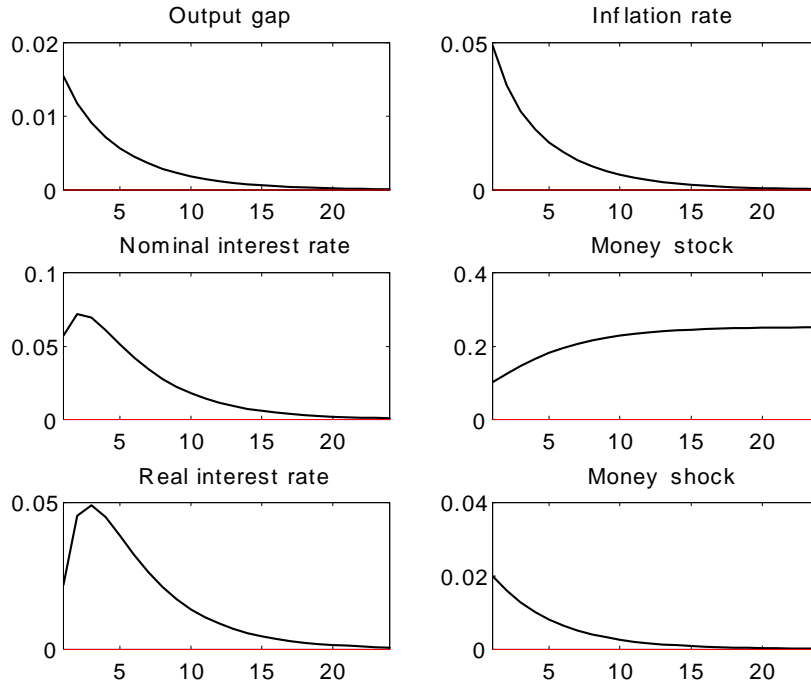


Figure 1: Impulse response functions after a money shock

A positive shock on the money stock leads to an increase in inflation, which induces a monetary policy tightening (Figure 1). The inflation rate and the output gap reach their equilibrium level while the nominal interest rate adjusts with a peak in the first periods. The output gap falls sharply due to a high

interest rate adjustment then returns to its equilibrium level faster than the inflation rate.

It is important to note that the interest rate reaches a peak and its reaction is stronger than the reactions of the output gap and the inflation rate at the beginning of the adjustment period. This implies that the ECB should react strongly to a money demand shock in order to stabilize the inflation rate.

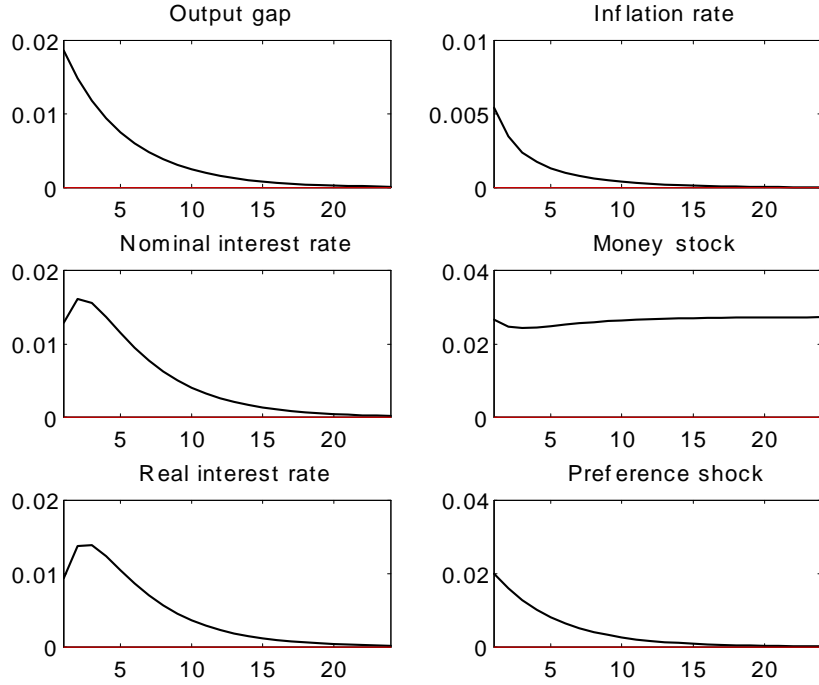


Figure 2: Impulse response functions of a preference shock

As Figure 2 shows, a positive preference (or consumption) shock leads to an increase in the nominal interest rate, which induces a short run decrease in the money stock (after an instantaneous increase), sustained by higher activity. Indeed, the output gap and the inflation rate largely increase, which explains the monetary policy tightening.

Another remark concerns the peak in the nominal interest rate response. It implies that the ECB needs to react strongly to a preference shock in order to eliminate the output gap.

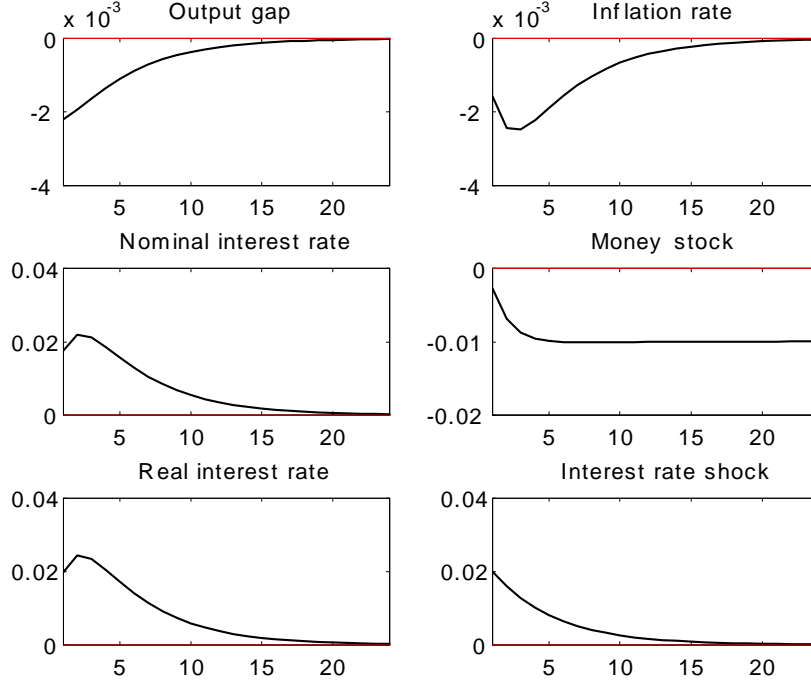


Figure 3: Impulse response functions of a nominal interest rate shock

As shown in Figure 3, a nominal interest rate shock leads to an instantaneous decrease in the inflation rate and the output gap. The results show a peak for the nominal interest rate at the beginning of the adjustment period. This means that a strong reaction by the ECB to a nominal interest rate shock in an important means to bring the inflation rate to its optimal path.

Note that the nominal interest rate goes up, though by less than its exogenous component (as a result of the downward adjustment induced by the decline in inflation and the output gap). In order to bring about the observed interest rate response, the ECB must engineer a reduction in the money supply. The calibrated model thus displays a liquidity effect.



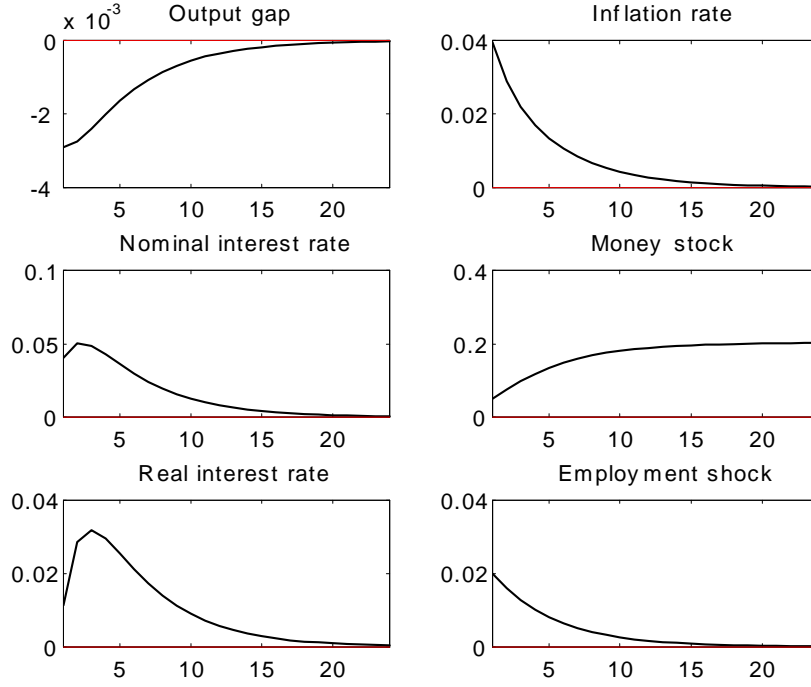


Figure 4: Impulse response functions of a worked hours shock

Figure 4 shows that a positive shock to employment leads to an instantaneous nominal interest rate tightening due to a surge in inflation. The money stock falls under its equilibrium value.

Again, our model shows a peak for the nominal interest rate. It implies that the ECB should react strongly to an employment shock at the very beginning of the adjustment period.

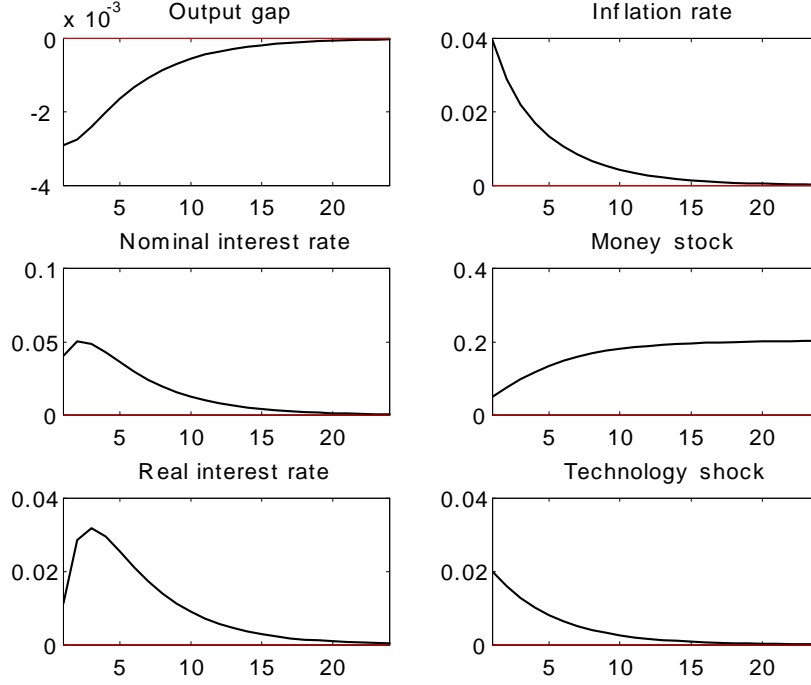


Figure 5: Impulse response functions of a technology shock

Figure 5 demonstrates that a technology shock leads to an instantaneous nominal interest rate tightening following a surge in inflation. The output gap deteriorates as well.

## 5 Interpretation

Kremer, Lombardo and Werner (2003) estimate a New-Keynesian DSGE model with German data (supposedly close to Euro area data) and find that real money balances contribute significantly to the determination of inflation and to the dynamics of output. Yet contrary to our findings, their impulse response function to a money demand shock does not show any peak for the nominal interest rate whereas our model magnifies the central bank reaction.

In a DSGE model calibrated for the German economy, the Deutsche Bundesbank (Eurosystem, 2008) analyses the response of selected variables to a preference shock. The results do not reveal any peak for the nominal interest rate, whereas our model highlights a significant and quick reaction. Nevertheless, our results are qualitatively similar to those stated in the Bundesbank paper even as the model utilized is built on a separable utility function.

Similarly, Bhattacharjee and Thoenissen (2007) compare two methods of introducing money in New Keynesian DSGE models (money-in-the-utility (MIU) or cash-in-advance (CIA) constraint). They observe that in response to an unexpected increase in the money growth rate, the CIA model generates hump-shaped impulse responses for output and its components. Following an interest rate shock the MIU case (completely separable money in the utility function) implies a fall of the inflation rate; but contrary to our model, it does not reveal any peak in the central bank's reaction. The main property of our model is therefore to magnify shocks and the curvature of the impulse response functions.

Casares (2006) describes a New Keynesian model calibrated on Euro area macroeconomic data. Its impulse response functions with interest rate smoothing (like in our model) don't highlight any nominal interest rate peak, except after an inflation shock. For other shocks, Casares' New Keynesian model doesn't magnify the central bank's response. Our model demonstrates this feature only because money enters the picture.

Last but not least, Galí (2008) simulates a baseline model with a separable utility function (MIU) where money does not play any role. Qualitatively, the results are similar to ours: most of the phenomena highlighted by these basic New Keynesian models are well replicated in our model, but for the nominal interest rate which peaks after the various shocks and the effects of a technology shock involving a monetary policy tightening.

Our impulse response analysis suggests that the method with which we introduce money into these type of models appears to add significant information. It clearly shows that assigning a larger role to money could be a useful tool to underpin the medium-term orientation of monetary policy and to stabilize the economy.

## 6 Conclusion

New Keynesian models downplay the role of monetary aggregates: the level of output, of inflation and of the interest rate can be determined without knowledge of the money stock. Our paper examines the validity of this view by studying the effects of structural shocks through a New Keynesian DSGE simulation on the Euro zone, with money included in a non-separable utility function.

Where money is introduced through an explicit CES utility function, we demonstrate that money should be a useful tool for central bankers. It incentivises monetary authorities to react more aggressively to shocks. According to our results and comparing them to other studies, our approach highlights the role of money in inflation and output gap determination. It also shows that taking money into consideration implies a stronger impact on the level of the interest rate whenever there is a shock to the system. Hence, even in New Keynesian models, money has an important role to play in terms of price and output dynamics. In accordance with our theoretical and empirical framework, the central bank should react more aggressively to shocks than when money is "forgotten".

Our approach sustains what seems to be the position of the Executive Board of the ECB (Jürgen Stark, 2006): "Taking policy decisions and evaluating their consequences only on the basis of the short-term indications stemming from the analysis of economic variables would be misguided. Assessing the trend evolution of monetary aggregates (...) allows a central bank to broaden its analysis. In particular, it often helps central banks to see beyond the transient impact of the various shocks hitting the economy. Therefore, it avoids setting monetary policy on an incompletely informed – and thus potentially destabilizing – course".

Even though the ECB may have gone as far as looking at the evolution of the money stock, it stopped short of drawing the consequences in terms of sufficiently controlling it. Regrettably, it seems the ECB ultimately did not quite practice what it preached.

## 7 Appendix

### 7.1 Aggregate consumption and price index

Let  $C_t = \left( \int_0^1 C_t(i)^{1-\frac{1}{\varepsilon}} di \right)^{\frac{\varepsilon}{\varepsilon-1}}$  be a consumption index where  $C_t(i)$  represents the quantity of good  $i$  consumed by the household in period  $t$ . This requires that  $C_t$  be maximized for any given level of expenditures  $\int_0^1 P_t(i) C_t(i) di$  where  $P_t(i)$  is the price of good  $i$  at time  $t$ . The maximization of  $C_t$  for any given expenditure level  $\int_0^1 P_t(i) C_t(i) di = Z_t$  can be formalized by means of the Lagrangian

$$\mathcal{L} = \left[ \int_0^1 C_t(i)^{1-\frac{1}{\varepsilon}} di \right]^{\frac{\varepsilon}{\varepsilon-1}} - \lambda \left( \int_0^1 P_t(i) C_t(i) di - Z_t \right) \quad (29)$$

The associated first-order conditions are  $C_t(i)^{-\frac{1}{\varepsilon}} C_t^{\frac{1}{\varepsilon}} = \lambda P_t(i)$  for all  $i \in [0, 1]$ . Thus, for any two goods  $(i, j)$ ,

$$C_t(i) = C_t(j) \left( \frac{P_t(i)}{P_t(j)} \right)^{-\varepsilon} \quad (30)$$

which can be substituted into the expression for consumption expenditures to yield  $C_t(i) = \left( \frac{P_t(i)}{P_t} \right)^{-\varepsilon} \frac{Z_t}{P_t}$  for all  $i \in [0, 1]$  where  $P_t = \left( \int_0^1 P_t(i)^{1-\varepsilon} di \right)^{\frac{1}{1-\varepsilon}}$  is an aggregate price index. The latter condition can then be substituted into the definition of  $C_t$  to obtain

$$\int_0^1 P_t(i) C_t(i) di = P_t C_t \quad (31)$$

Combining the two previous equations yields the demand schedule equation  $C_t(i) = \left( \frac{P_t(i)}{P_t} \right)^{-\varepsilon} C_t$  for all  $i \in [0, 1]$

## 7.2 Optimization problem

Our Lagrangian is given by

$$L_t = E_t \left[ \sum_{k=0}^{\infty} \beta^k U_{t+k} - \lambda_{t+k} V_{t+k} \right] \quad (32)$$

where

$$V_t = C_t + \frac{M_t}{P_t} + Q_t \frac{B_t}{P_t} - \frac{B_{t-1}}{P_t} - \frac{W_t}{P_t} N_t - \frac{M_{t-1}}{P_t} \quad (33)$$

and

$$U_t = e^{\varepsilon_t^P} \left( \frac{1}{1-\sigma} \left( (1-b) C_t^{1-\nu} + b e^{\varepsilon_t^M} \left( \frac{M_t}{P_t} \right)^{1-\nu} \right)^{\frac{1-\sigma}{1-\nu}} - \frac{\chi e^{\varepsilon_t^N} N_t^{1+\eta}}{1+\eta} \right) \quad (34)$$

The first order condition related to consumption expenditures is given by

$$\lambda_t = e^{\varepsilon_t^P} (1-b) C_t^{-\nu} \left( (1-b) C_t^{1-\nu} + b e^{\varepsilon_t^M} \left( \frac{M_t}{P_t} \right)^{1-\nu} \right)^{\frac{1-\sigma}{1-\nu}-1} \quad (35)$$

where  $\lambda_t$  is the Lagrange multiplier associated with the budget constraint at time  $t$ . The first order condition corresponding to the demand for contingent bonds implies that

$$Q_t = \beta E_t \left[ \frac{\lambda_{t+1}}{\lambda_t} \frac{P_t}{P_{t+1}} \right] \quad (36)$$

The demand for cash that follows from the household's optimization problem is given by

$$b e^{\varepsilon_t^M} e^{\varepsilon_t^P} \left( \frac{M_t}{P_t} \right)^{-\nu} \left( (1-b) C_t^{1-\nu} + b e^{\varepsilon_t^M} \left( \frac{M_t}{P_t} \right)^{1-\nu} \right)^{\frac{1-\sigma}{1-\nu}-1} = \lambda_t - \beta E_t \left[ \lambda_{t+1} \frac{P_t}{P_{t+1}} \right] \quad (37)$$

which can be naturally interpreted as a demand for real balances. The latter is increasing in consumption and inversely related to the nominal interest rate, as in conventional specifications.

$$\chi e^{\varepsilon_t^P} e^{\varepsilon_t^N} N_t^\eta = \lambda_t \frac{W_t}{P_t} \quad (38)$$

We obtain from (35)

$$U_{c,t} = e^{\varepsilon_t^P} (1-b) C_t^{-\nu} \left( (1-b) C_t^{1-\nu} + b e^{\varepsilon_t^M} \left( \frac{M_t}{P_t} \right)^{1-\nu} \right)^{\frac{1-\sigma}{1-\nu}-1} \quad (39)$$

where  $U_{c,t} = \left. \frac{\partial U_{t+k}}{\partial C_{t+k}} \right|_{k=0}$ . Equation (39) defines the marginal utility of consumption. Hence, the optimal consumption/savings, real money balances and labor supply decisions are described by the following conditions:

- Combining (35) with (36) gives

$$Q_t = \beta E_t \left[ \frac{U_{c,t+1}}{U_{c,t}} \frac{P_t}{P_{t+1}} \right] \quad (40)$$

$$Q_t = \beta E_t \left[ \frac{e^{\varepsilon_{t+1}^P} C_{t+1}^{-\nu} P_t}{e^{\varepsilon_t^P} C_t^{-\nu} P_{t+1}} \left( \frac{(1-b) C_{t+1}^{1-\nu} + b e^{\varepsilon_{t+1}^M} \left( \frac{M_{t+1}}{P_{t+1}} \right)^{1-\nu}}{(1-b) C_t^{1-\nu} + b e^{\varepsilon_t^M} \left( \frac{M_t}{P_t} \right)^{1-\nu}} \right)^{\frac{1-\sigma}{1-\nu}-1} \right] \quad (41)$$

where  $U_{c,t+1} = \frac{\partial U_{t+k}}{\partial C_{t+k}} \Big|_{k=1}$ . Equation (40) is the usual Euler equation for intertemporal consumption flows. It establishes that the ratio of marginal utility of future and current consumption is equal to the inverse of the real interest rate. The above equation can be rewritten as

$$e^{-i_t} = \beta E_t \left[ \frac{e^{\varepsilon_{t+1}^P} C_{t+1}^{-\nu} Z_{t+1}^{\frac{\nu-\sigma}{1-\nu}} P_t}{e^{\varepsilon_t^P} C_t^{-\nu} Z_t^{\frac{\nu-\sigma}{1-\nu}} P_{t+1}} \right]$$

where  $Z_t = (1-b) C_t^{1-\nu} + b e^{\varepsilon_t^M} \left( \frac{M_t}{P_t} \right)^{1-\nu}$ . Linearizing the above equation around the steady state yields

$$-\hat{i}_t = E_t \left[ \Delta \hat{\varepsilon}_{t+1}^P - \nu \Delta \hat{c}_{t+1} - \hat{\pi}_{t+1} + \frac{\nu-\sigma}{1-\nu} \Delta \hat{z}_{t+1} \right] \quad (42)$$

where  $\hat{z}_t = Z_t - Z^{ss}$  and  $\hat{z}_t = (1-\nu) a_1 \hat{c}_t + \hat{\varepsilon}_t^M + (1-\nu)(1-a_1)(\hat{m}_t - \hat{p}_t)$  with  $a_1 = \frac{(1-b)C_{ss}^{1-\nu}}{(1-b)C_{ss}^{1-\nu} + b \left( \frac{M_{ss}}{P_{ss}} \right)^{1-\nu}}$ ,  $C_{ss}$  consumption in the steady state and  $\frac{M_{ss}}{P_{ss}}$  real money balances in the steady state. Thus,

$$-\hat{i}_t = E_t \left[ \begin{aligned} &((\nu-\sigma) a_1 - \nu) \Delta \hat{c}_{t+1} - \hat{\pi}_{t+1} - (\nu-\sigma)(1-a_1) \hat{\pi}_{t+1} \\ &+ (\nu-\sigma)(1-a_1) \Delta \hat{m}_{t+1} + \left( \frac{\nu-\sigma}{1-\nu} \right) \Delta \hat{\varepsilon}_{t+1}^M + \Delta \hat{\varepsilon}_{t+1}^P \end{aligned} \right] \quad (43)$$

- Combining (35) with (37) gives

$$\frac{U_{m,t}}{U_{c,t}} = 1 - Q_t \quad (44)$$

$$\frac{b e^{\varepsilon_t^M} \left( \frac{M_t}{P_t} \right)^{-\nu}}{(1-b) C_t^{-\nu}} = 1 - Q_t \quad (45)$$

where  $U_{m,t} = \frac{\partial U_{t+k}}{\partial (M_{t+k}/P_{t+k})} \Big|_{k=0}$ . Equation (44) is the intertemporal optimality condition setting the marginal rate of substitution between money and consumption equal to the opportunity cost of holding money. By log-linearizing the above equation, we obtain

$$-\nu(\hat{m}_t - \hat{p}_t) + \hat{\varepsilon}_t^M + \nu \hat{c}_t = a_2 \hat{i}_t$$

where  $i_t = -\log Q_t$ ; by using a second order Taylor approximation, with  $a_2$  constant, yields  $\log(1 - Q_t) = a_2 i_t$ .

- Combining (35) with (38) leads to

$$-\frac{U_{n,t}}{U_{c,t}} = \frac{W_t}{P_t} \quad (46)$$

$$\frac{\chi e^{\varepsilon_t^N} N_t^\eta}{(1-b) C_t^{-\nu} \left( (1-b) C_t^{1-\nu} + b e^{\varepsilon_t^M} \left( \frac{M_t}{P_t} \right)^{1-\nu} \right)^{\frac{1-\sigma}{1-\nu}-1}} = \frac{W_t}{P_t} \quad (47)$$

where  $U_{n,t} = \left. \frac{\partial U_{k,t}}{\partial N_{t+k}} \right|_{k=0}$ . Equation (46) is the condition for the optimal consumption-leisure arbitrage, implying that the marginal rate of substitution between consumption and labor is equated to the real wage. By log-linearizing the above equation around the steady state, we obtain

$$\begin{aligned} & \eta \hat{n}_t + (\nu - (\nu - \sigma) a_1) \hat{c}_t - \left( \frac{\nu - \sigma}{1 - \nu} \right) \hat{\varepsilon}_t^M \\ & - (\nu - \sigma) (1 - a_1) (\hat{m}_t - \hat{p}_t) + \hat{\varepsilon}_t^N = \hat{w}_t - \hat{p}_t \end{aligned} \quad (48)$$

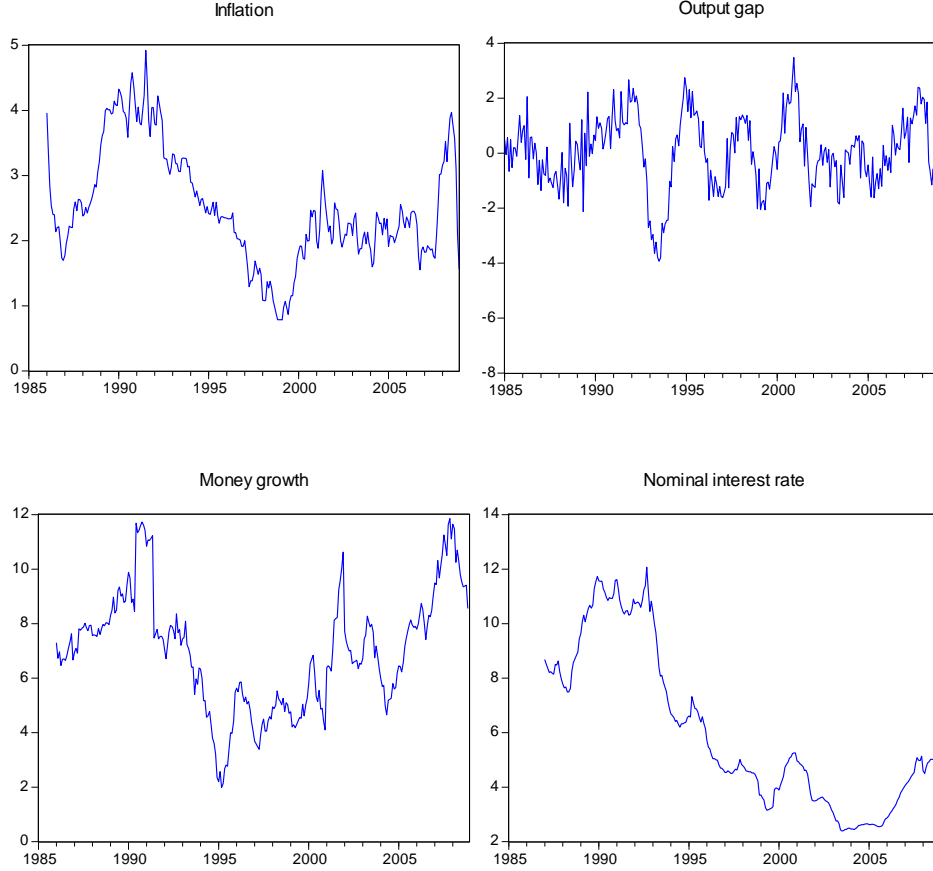
### 7.3 Coefficients of the model

$$\begin{aligned} \kappa_{\pi,+1} &= \frac{\beta}{1 + \beta + \frac{1-\alpha}{1-\alpha+\alpha\varepsilon} \left( \frac{1-\theta}{\theta} \right) (1 - \beta\theta) (\sigma - \nu) (1 - a_1)} \\ \kappa_{\pi,-1} &= \frac{1}{1 + \beta + \frac{1-\alpha}{1-\alpha+\alpha\varepsilon} \left( \frac{1-\theta}{\theta} \right) (1 - \beta\theta) (\sigma - \nu) (1 - a_1)} \\ \kappa_x &= \frac{\frac{1-\alpha}{1-\alpha+\alpha\varepsilon} \left( \frac{1-\theta}{\theta} \right) (1 - \beta\theta) (\sigma - \nu) (1 - a_1) \left( \nu - (\nu - \sigma) a_1 + \frac{\eta+\alpha}{1-\alpha} \right)}{1 + \beta + \frac{1-\alpha}{1-\alpha+\alpha\varepsilon} \left( \frac{1-\theta}{\theta} \right) (1 - \beta\theta) (\sigma - \nu) (1 - a_1)} \\ \kappa_m &= \frac{1}{\frac{\frac{1-\alpha}{1-\alpha+\alpha\varepsilon} \left( \frac{1-\theta}{\theta} \right) (1 - \beta\theta) (\sigma - \nu) (1 - a_1)}{1 + \beta} + 1} \\ \kappa_r &= \frac{1}{\nu - (\nu - \sigma) a_1} \\ \kappa_{mp} &= \frac{(\nu - \sigma) (1 - a_1)}{(\nu - \sigma) a_1 - \nu} \\ \kappa_i &= \frac{a_2}{\nu} \end{aligned}$$

## 7.4 Estimations

The DSGE model parameters are estimated by using the General Method of Moments.

### 7.4.1 Data



The above data on the Euro area are of a monthly frequency from 1985 to 2008 and are extracted from the Datastream base.  $\hat{x}_t$  (output gap) is the difference between the log-linearized output around the steady state ( $\hat{y}_t = y_t - y$ ) and the log-linearized output around the steady state with flexible prices ( $\hat{x}_t = \hat{y}_t - \hat{y}_t^f$ ).  $y_t$  is the log of the industrial production index (excluding construction) and  $\hat{y}_t^f$  is the Hodrick-Prescott log of the industrial production index (excluding construction).  $\Delta\hat{x}_t$  is then the detrended variation of the output gap. It corresponds to the difference between the output gap in period  $t$



and the output gap in period  $t-12$ . A lag of twelve periods is chosen because it is important to compare the same months across years to avoid seasonal variations.  $\hat{\pi}_t$  (inflation rate) is the difference between the log-linearized (around the steady state) price index<sup>10</sup> in period  $t$  and the price index in period  $t-12$ .  $\hat{m}_t$  (money stock) is the difference between log-linearized money stock and its steady state value ( $\hat{m}_t = m_t - m$ ).

#### 7.4.2 Inflation equation

TABLE 1: estimation of equation (25)			
$\hat{\pi}_t = \kappa_{\pi,+1}E_t[\hat{\pi}_{t+1}] + \kappa_{\pi,-1}\hat{\pi}_{t-1} + \kappa_x\Delta\hat{x}_t + \kappa_m\Delta\hat{m}_t + z_t^\pi$			
$\kappa_{\pi,+1}$ (t-ratio)	$\kappa_{\pi,-1}$ (t-ratio)	$\kappa_x$ (t-ratio)	$\kappa_m$ (t-ratio)
0.48902** (47.33)	0.49392** (47.33)	0.04665 (1.77)	0.10843 (1.56)
$R^2$	J-statistic	Observations	
0.70290	0.01078	252	

Estimation Method: Generalized Method of Moments (GMM); Sample: January 1987 to December 2007; Kernel: Quadratic, Bandwidth: Andrews (14.97), No prewhitening; Linear estimation after one-step weighting matrix; Instruments:  $\hat{x}_{t-3}$ ,  $\hat{m}_{t-3}$ ,  $\hat{x}_{t-6}$ ,  $\hat{m}_{t-6}$ ,  $\hat{x}_{t-12}$ ,  $\hat{m}_{t-12}$ .

#### 7.4.3 Output gap equation

TABLE 2: estimation of equation (26)		
$\hat{x}_t = E_t[\hat{x}_{t+1}] - \kappa_r(\hat{i}_t - E_t[\hat{\pi}_{t+1}]) + \kappa_{mp}(E_t[\Delta\hat{m}_{t+1}] - E_t[\hat{\pi}_{t+1}]) + z_t^x$		
$\kappa_r$ (t-ratio)	$\kappa_{mp}$ (t-ratio)	
0.01252** (11.23)	0.00212** (3.02)	
$R^2$	J-statistic	Observations
0.77224	0.01297	239

Estimation Method: Generalized Method of Moments; Sample: April 1988 to November 2007; Kernel: Quadratic, Bandwidth: Andrews (25.28), No prewhitening; Linear estimation after one-step weighting matrix; Instruments:  $\hat{\pi}_{t-3}$ ,  $\hat{m}_{t-3}$ ,  $\hat{i}_{t-3}$ ,  $\hat{\pi}_{t-6}$ ,  $\hat{m}_{t-6}$ ,  $\hat{i}_{t-6}$ ,  $\hat{\pi}_{t-9}$ ,  $\hat{m}_{t-9}$ ,  $\hat{i}_{t-9}$ ,  $\hat{\pi}_{t-12}$ ,  $\hat{m}_{t-12}$ ,  $\hat{i}_{t-12}$ .

<sup>10</sup> Measured as the 12-month increase in the Euro-area Harmonized Consumer Price Index (HCPI),

#### 7.4.4 Money stock equation

TABLE 3: estimation of equation (27)		
$\hat{m}_t = \hat{m}_{t-1} + \hat{\pi}_t + \Delta \hat{x}_t + \kappa_i \Delta \hat{i}_t + z_t^m$		
	$\kappa_i$ (t-ratio)	
	0.43869 (1.57)	
$R^2$	J-statistic	Observations
0.22181	0.06866	251

Estimation Method: Generalized Method of Moments; Sample: January 1988 to November 2007; Kernel: Bartlett, Bandwidth: Andrews (144.52), No prewhitening; Linear estimation after one-step weighting matrix; Instruments:  $\hat{x}_{t-3}$ ,  $\hat{i}_{t-3}$ ,  $\hat{x}_{t-6}$ ,  $\hat{i}_{t-6}$ ,  $\hat{x}_{t-9}$ ,  $\hat{i}_{t-9}$ ,  $\hat{x}_{t-12}$ ,  $\hat{i}_{t-12}$ .

#### 7.4.5 Interest rate equation

TABLE 4: estimation of equation (28)		
$\hat{i}_t = (1 - \lambda_i) (\lambda_\pi \hat{\pi}_t + \lambda_x \hat{x}_t) + \lambda_i \hat{i}_{t-1} + z_t^i$		
$\lambda_i$ (t-ratio)	$\lambda_\pi$ (t-ratio)	$\lambda_x$ (t-ratio)
0.533002** (5.84)	2.234246** (9.74)	0.824707** (3.01)
$R^2$	J-statistic	Observations
0.87267	0.02690	251

Estimation Method: Generalized Method of Moments; Sample: January 1988 to November 2008; Kernel: Quadratic, Bandwidth: Andrews (32.89), No prewhitening; Linear estimation after one-step weighting matrix; Instruments:  $\hat{x}_{t-3}$ ,  $\hat{\pi}_{t-3}$ ,  $\hat{x}_{t-6}$ ,  $\hat{\pi}_{t-6}$ ,  $\hat{x}_{t-9}$ ,  $\hat{\pi}_{t-9}$ ,  $\hat{x}_{t-12}$ ,  $\hat{\pi}_{t-12}$ .

### 7.5 Decomposition of shocks

The decomposition of shocks yields the following equations

$$\begin{aligned}
z_t^\pi &= \frac{\lambda_{mc}}{1+\beta+\lambda_{mc}\psi_m} \left( \Delta \left( \hat{\varepsilon}_t^N - \hat{\varepsilon}_t^{Nf} \right) - \left( \frac{\nu-\sigma}{1-\nu} \right) \Delta \left( \hat{\varepsilon}_t^M - \hat{\varepsilon}_t^{Mf} \right) - \psi_m \left( \Delta \hat{m}_t^f - \hat{\pi}_t^f \right) \right) \\
z_t^x &= -\frac{1}{\nu+(\sigma-\nu)a_1} \left( \frac{\nu-\sigma}{1-\nu} \right) E_t \left[ \Delta \hat{\varepsilon}_{t+1}^M \right] - \frac{1}{\nu+(\sigma-\nu)a_1} E_t \left[ \Delta \hat{\varepsilon}_{t+1}^P \right] + E_t \left[ \Delta \hat{y}_{t+1}^f \right] \\
z_t^m &= \frac{1}{\nu} \Delta \hat{\varepsilon}_t^M - \Delta \hat{y}_t^f \\
z_t^i &= \rho_i z_{t-1}^i + \varepsilon_t^i \\
\hat{a}_t &= \rho_a \hat{a}_{t-1} + \varepsilon_t^a
\end{aligned}$$

We know that the natural rate of interest could be written as

$$r_t^n = \rho + \sigma E_t \left[ \Delta y_{t+1}^f \right]$$

where  $\rho$  and  $\sigma$  are parameters and  $y_t^f$  is the production in the case of flexible prices. By using equation (19), we obtain

$$\Delta \hat{m}_t^f - \hat{\pi}_t^f = \frac{1}{v_m^f} \left( \Delta \hat{y}_t^f - v_a^f \Delta \hat{a}_t - \Delta v_t^f \right)$$

where  $\hat{a}_t$  is the log of the level of technology (see equation (7)) and  $v_t^f$  comes from (19). Then, we can assume that

$$\Delta \hat{m}_t^f - \hat{\pi}_t^f \cong \frac{1}{v_m^f} \left( \hat{r}_{t-1}^n - v_a^f \Delta \hat{a}_t \right) + tip_t$$

where  $tip_t$  includes shocks that are policy independent. Hence shocks can be rewritten as follows

$$\begin{aligned} z_t^\pi &= \frac{\lambda_{mc}}{1+\beta+\lambda_{mc}\psi_m} \left( \Delta \hat{\varepsilon}_t^N - \left( \frac{\nu-\sigma}{1-\nu} \right) \Delta \hat{\varepsilon}_t^M - \frac{\psi_m}{v_m^f} \left( \hat{r}_{t-1}^n - v_a^f \Delta \hat{a}_t \right) + tip_t \right) \\ z_t^x &= -\frac{1}{\nu+(\sigma-\nu)a_1} \left( \frac{\nu-\sigma}{1-\nu} \right) E_t \left[ \Delta \hat{\varepsilon}_{t+1}^M \right] - \frac{1}{\nu+(\sigma-\nu)a_1} E_t \left[ \Delta \hat{\varepsilon}_{t+1}^P \right] + \hat{r}_t^n \\ z_t^m &= \frac{1}{\nu} \Delta \hat{\varepsilon}_t^M - \hat{r}_{t-1}^n \\ z_t^i &= \rho_i z_{t-1}^i + \varepsilon_t^i \\ \hat{a}_t &= \rho_a \hat{a}_{t-1} + \varepsilon_t^a \end{aligned}$$

## References

- [1] Assenlacher-Wesche, Katrin and Stefan Gerlach. (2006). "Understanding the link between money growth and inflation in the Euro area." CEPR Discussion Paper #5683.
- [2] Andrés, Javier, J. David López-Salido and Edward Nelson. 2009. "Money and the natural rate of interest: Structural estimates for the United States and the euro area." *Journal of Economic Dynamics and Control*, 33, 758-776.
- [3] Andrés, Javier, J. David López-Salido, and Javier Vallés. (2006). "Money in an Estimated Business Cycle Model of the Euro Area." *The Economic Journal*, 116, 457-477.
- [4] Bhattacharjee, Arnab and Christoph Thoenissen. (2007). "Money and Monetary Policy in Dynamic Stochastic General Equilibrium Models." *The Manchester School*, 75, 88-122.
- [5] Belke, Ansgar and Thorstein Polleit. (2007). "How the ECB and the US Fed set interest rates." *Applied Economics*, 39, 2197-2209.
- [6] Benhabib, Jess, Stephanie Schmitt-Grohé and Martín Uribe. (2001). "Monetary Policy and Multiple Equilibria." *The American Economic Review*, 91, 167-186.

- [7] Berger, Hlege and Pär Österholm. (2008). "Does money growth Granger-cause inflation in the Euro Area? Evidence from out-of-sample forecasts using Bayesian VARs." IMF Working Paper, WP/08/53.
- [8] Casares, MigueI. (2007). "Monetary Policy Rules in a New Keynesian Euro Area Model." *Journal of Money, Credit and Banking*, 39, 875-900.
- [9] Christiano, Lawrence, Roberto Motto and Massimo Rostagno. (2007). "Two reasons why money and credit may be useful in monetary policy." NBER Working Paper #13502.
- [10] Clarida, Richard, Jordi Galí and Mark Gertler. (1999). "The science of monetary policy: a new Keynesian perspective." *Journal of Economic Literature*, 37, 1661-1707.
- [11] Dixit, Avinash K. and Joseph E. Stiglitz. (1977). "Monopolistic Competition and Optimum Product Diversity." *American Economic Review*, 67, 297-308.
- [12] Fendel, Ralf M. and Michael R. Frenkel. (2006). "Five years of single European monetary policy in practice: Is the ECB rule-based ?." *Contemporary Economic Policy*, 24, 106-115.
- [13] Fendel, Ralf M. and Michale Frenkel. (2008). "Inflation differentials in the Euro area: did the ECB care ?." *Applied Economics*, 40, 1-10.
- [14] Fourçans, André and Radu Vranceanu. (2004). "The ECB interest rate rule under Duisenberg presidency." *European Journal of Political Economy*, 20, 579-595.
- [15] Fourçans, André and Radu Vranceanu. (2006). "The ECB monetary policy: Choices and challenges." *Journal of Policy Modelling*, 29, 181-194.
- [16] Galí, Jordi and Mark Gertler. (2007). "Macroeconomic modelling for monetary policy evaluation." *Journal of Economic Perspectives*, 21, 25-45.
- [17] Galí, Jordi. (2008). *Monetary Policy, Inflation and the Business Cycle: An Introduction to the New Keynesian Framework*. Princeton, NJ.: Princeton University Press.
- [18] Garcia-Iglesias, Jesus M. (2007). "How the European Central Bank decided its early monetary policy ?." *Applied Economics*, 39, 927-936.
- [19] Gerlach, Stefan. (2004). "The pillars of the ECB." *Economic Policy*, 40, 389-439.
- [20] Chang, Wen-ya. (2002). "Examining the long-run effect of money on economic growth: an alternative view." *Journal of Macroeconomics*, 24, 81-102.

- [21] Golinelli, Roberto and Sergio Pastorello. (2002). "Modelling the demand for M3 in the Euro area." *The European Journal of Finance*, 8, 371-401.
- [22] Hofmann, Boris. (2008). "Do monetary indicators lead Euro area inflation ?." ECB Working Paper #867.
- [23] Ireland, Peter N. (2004). "Money's Role in the Monetary Business Cycle." *Journal of Money, Credit and Banking*, 36, 969-83.
- [24] Jones, Barry E. and Livio Stracca. (2008). "Does Money Matter In The Is Curve? The Case Of The UK." *The Manchester School*, 76, 58-84.
- [25] Kremer, Jana, Giovanni Lombardo and Thomas Werner. (2003). "Money in a New-Keynesian model estimated with German data." *Deutsche Bundesbank*, #15/2003.
- [26] Kaufmann, Sylvia and Peter Kugler. (2008). "Does Money Matter for Inflation in the Euro Area ?." *Contemporary Economic Policy*, 26, 590-606.
- [27] Leeper, Eric and Jennifer Roush. (2003). "Putting "M" back in monetary policy." *Journal of Money, Credit and Banking*, 35, 1217-1256.
- [28] Lindé, Jesper. (2005). "Estimating New-Keynesian Phillips curves: A full information maximum likelihood approach." *Journal of Monetary Economics*, 52, 1135-1149.
- [29] Nelson, Edward. (2008). "Why money growth determines inflation in the long run: Answering the Woodford critique." *Federal Reserve Bank of St. Louis*, #2008-013A.
- [30] Nelson, Edward. (2002). "Direct effects of base money on aggregate demand: theory and evidence." *Journal of Monetary Economics*, 49, 687-708.
- [31] Neumann, Manfred J.M. and Claus Greiber. (2004). "Inflation and core money growth in the Euro Area." *Deutsche Bundesbank Discussion Paper*, #36/2004.
- [32] Smets, Frank and Raf Wouters. (2003). "An Estimated Dynamic Stochastic General Equilibrium Model for the Euro Area." *Journal of the European Economic Association*, 1, 1123-175.
- [33] Stark, Jürgen. (2006). "The role of money: Money and monetary policy in the twenty-first century." *Fourth ECB Central Banking Conference, Frankfurt am Main*.
- [34] Surico, Paolo. (2007). "The monetary policy of the European Central Bank." *Scandinavian Journal of Economics*, 109, 115-135.
- [35] Söderström, Ulf. (2005). "Targeting Inflation with a Role for Money." *Economica*, 72, 577-596.

- [36] Walsh, Carl E. (1998). *Monetary Theory and Policy*. Cambridge: MA.: The MIT Press.
- [37] Woodford, Michael. (2003). *Interest and prices: Foundations of a theory of monetary policy*. Princeton, NJ.: Princeton University Press.

---

---

**LISTE DES DOCUMENTS DE RECHERCHE DU CENTRE DE RECHERCHE DE L'ESSEC**  
(Pour se procurer ces documents, s'adresser au CENTRE DE RECHERCHE DE L'ESSEC)

**LISTE OF ESSEC RESEARCH CENTER WORKING PAPERS**  
(Contact the ESSEC RESEARCH CENTER for information on how to obtain copies of these papers)

RESEARCH.CENTER@ESSEC.FR

---

---

**2004**

- 04001 BESANCENOT Damien, VRANCEANU Radu**  
Excessive Liability Dollarization in a Simple Signaling Model
- 04002 ALFANDARI Laurent**  
Choice Rules Size Constraints for Multiple Criteria Decision Making
- 04003 BOURGUIGNON Annick, JENKINS Alan**  
Management Accounting Change and the Construction of Coherence in Organisations: a Case Study
- 04004 CHARLETY Patricia, FAGART Marie-Cécile, SOUAM Saïd**  
Real Market Concentration through Partial Acquisitions
- 04005 CHOFFRAY Jean-Marie**  
La révolution Internet
- 04006 BARONI Michel, BARTHELEMY Fabrice, MOKRANE Mahdi**  
The Paris Residential Market: Driving Factors and Market Behaviour 1973-2001
- 04007 BARONI Michel, BARTHELEMY Fabrice, MOKRANE Mahdi**  
Physical Real Estate: A Paris Repeat Sales Residential Index
- 04008 BESANCENOT Damien, VRANCEANU Radu**  
The Information Limit to Honest Managerial Behavior
- 04009 BIZET Bernard**  
Public Property Privatization in France
- 04010 BIZET Bernard**  
Real Estate Taxation and Local Tax Policies in France
- 04011 CONTENSOU François**  
Legal Profit-Sharing: Shifting the Tax Burden in a Dual Economy
- 04012 CHAU Minh, CONTENSOU François**  
Profit-Sharing as Tax Saving and Incentive Device
- 04013 REZZOUK Med**  
Cartels globaux, riposte américaine. L'ère Empagran ?

## 2005

- 05001 VRANCEANU Radu**  
The Ethical Dimension of Economic Choices
- 05002 BARONI Michel, BARTHELEMY Fabrice, MOKRANE Mahdi**  
A PCA Factor Repeat Sales Index (1973-2001) to Forecast Apartment Prices in Paris (France)
- 05003 ALFANDARI Laurent**  
Improved Approximation of the General Soft-Capacitated Facility Location Problem
- 05004 JENKINS Alan**  
Performance Appraisal Research: A Critical Review of Work on "the Social Context and Politics of Appraisal"
- 05005 BESANCENOT Damien, VRANCEANU Radu**  
Socially Efficient Managerial Dishonesty
- 05006 BOARI Mircea**  
Biology & Political Science. Foundational Issues of Political Biology
- 05007 BIBARD Laurent**  
Biologie et politique
- 05008 BESANCENOT Damien, VRANCEANU Radu**  
Le financement public du secteur de la défense, une source d'inefficacité ?

## 2006

- 06001 CAZAVAN-JENY Anne, JEANJEAN Thomas**  
Levels of Voluntary Disclosure in IPO prospectuses: An Empirical Analysis
- 06002 BARONI Michel, BARTHELEMY Fabrice, MOKRANE Mahdi**  
Monte Carlo Simulations versus DCF in Real Estate Portfolio Valuation
- 06003 BESANCENOT Damien, VRANCEANU Radu**  
Can Incentives for Research Harm Research? A Business Schools Tale
- 06004 FOURCANS André, VRANCEANU Radu**  
Is the ECB so Special? A Qualitative and Quantitative Analysis
- 06005 NAIDITCH Claire, VRANCEANU Radu**  
Transferts des migrants et offre de travail dans un modèle de signalisation
- 06006 MOTTIS Nicolas**  
Bologna: Far from a Model, Just a Process for a While...
- 06007 LAMBERT Brice**  
Ambiance Factors, Emotions and Web User Behavior: A Model Integrating and Affective and Symbolical Approach
- 06008 BATISTA Catia, POTIN Jacques**  
Stages of Diversification and Capital Accumulation in an Heckscher-Ohlin World, 1975-1995
- 06009 TARONDEAU Jean-Claude**  
Strategy and Organization Improving Organizational Learning
- 06010 TIXIER Daniel**  
Teaching Management of Market Driven Business Units Using Internet Based Business Games
- 06011 COEURDACIER Nicolas**  
Do Trade Costs in Goods Market Lead to Home Bias in Equities?



- 06012 AVIAT Antonin, COEURDACIER Nicolas**  
The Geography of Trade in Goods and Asset Holdings
- 06013 COEURDACIER Nicolas, GUIBAUD Stéphane**  
International Portfolio Diversification Is Better Than You Think
- 06014 COEURDACIER Nicolas, GUIBAUD Stéphane**  
A Dynamic Equilibrium Model of Imperfectly Integrated Financial Markets
- 06015 DUAN Jin-Chuan, FULOP Andras**  
Estimating the Structural Credit Risk Model When Equity Prices Are Contaminated by Trading Noises
- 06016 FULOP Andras**  
Feedback Effects of Rating Downgrades
- 06017 LESCOURRET Laurence, ROBERT Christian Y.**  
Preferencing, Internalization and Inventory Position
- 06018 BOURGUIGNON Annick, SAULPIC Olivier, ZARLOWSKI Philippe**  
Management Accounting Change in the Public Sector: A French Case Study and a New Institutional Perspective
- 06019 de BEAUFORT Viviane**  
One Share – One Vote, le nouveau Saint Graal ?
- 06020 COEURDACIER Nicolas, MARTIN Philippe**  
The Geography of Asset Trade and the Euro: Insiders and Outsiders
- 06021 BESANCENOT Damien, HUYNH Kim, VRANCEANU Radu**  
The "Read or Write" Dilemma in Academic Production: A European Perspective

## **2007**

- 07001 NAIDITCH Claire, VRANCEANU Radu**  
International Remittances and Residents' Labour Supply in a Signaling Model
- 07002 VIENS G., LEVESQUE K., CHAHWAKILIAN P., EL HASNAOUI A., GAUDILLAT A., NICOL G., CROUZIER C.**  
Évolution comparée de la consommation de médicaments dans 5 pays européens entre 2000 et 2004 : analyse de 7 classes pharmaco-thérapeutiques
- 07003 de BEAUFORT Viviane**  
La création d'entreprise au féminin dans le monde occidental
- 07004 BOARI Mircea**  
Rationalizing the Irrational. The Principle of Relative Maximization from Sociobiology to Economics and Its Implications for Ethics
- 07005 BIBARD Laurent**  
Sexualités et mondialisation
- 07006 VRANCEANU Radu**  
The Moral Layer of Contemporary Economics: A Virtue Ethics Perspective
- 07007 LORINO Philippe**  
Stylistic Creativity in the Utilization of Management Tools
- 07008 BARONI Michel, BARTHELEMY Fabrice, MOKRANE Mahdi**  
Optimal Holding Period for a Real Estate Portfolio
- 07009 de BEAUFORT Viviane**  
One Share - One Vote, the New Holy Graal?
- 07010 DEMEESTERE René**  
L'analyse des coûts : public ou privé ?

- 07011 TIXIER Maud**  
Appreciation of the Sustainability of the Tourism Industry in Cyprus
- 07012 LORINO Philippe**  
Competence-based Competence Management: a Pragmatic and Interpretive Approach. The Case of a Telecommunications Company
- 07013 LORINO Philippe**  
Process Based Management and the Central Role of Dialogical Collective Activity in Organizational Learning. The Case of Work Safety in the Building Industry
- 07014 LORINO Philippe**  
The Instrumental Genesis of Collective Activity. The Case of an ERP Implementation in a Large Electricity Producer
- 07015 LORINO Philippe, GEHRKE Ingmar**  
Coupling Performance Measurement and Collective Activity: The Semiotic Function of Management Systems. A Case Study
- 07016 SALLEZ Alain**  
Urbaphobie et désir d'urbain, au péril de la ville
- 07017 de CARLO Laurence**  
The Classroom as a Potential Space - Teaching Negotiation through Paradox
- 07019 ESPOSITO VINZI Vincenzo**  
Capturing and Treating Unobserved Heterogeneity by Response Based Segmentation in PLS Path Modeling. A Comparison of Alternative Methods by Computational Experiments
- 07020 CHEVILLON Guillaume, Christine RIFFLART**  
Physical Market Determinants of the Price of Crude Oil and the Market Premium
- 07021 CHEVILLON Guillaume**  
Inference in the Presence of Stochastic and Deterministic Trends
- 07023 COLSON Aurélien**  
The Ambassador, between Light and Shade. The Emergence of Secrecy as the Norm of International Negotiation
- 07024 GOMEZ Marie-Léandre**  
A Bourdieusian Perspective on Strategizing
- 07025 BESANCENOT Damien, VRANCEANU Radu**  
Multiple Equilibria in a Firing Game with Impartial Justice
- 07026 BARONI Michel, BARTHELEMY Fabrice, MOKRANE Madhi**  
Is It Possible to Construct Derivatives for the Paris Residential Market?

## **2008**

- 08001 BATISTA Catia, POTIN Jacques**  
International Specialization and the Return to Capital, 1976-2000
- 08002 BESANCENOT Damien, FARIA Joan Ricardo, VRANCEANU Radu**  
Why Business Schools do so much Research: a Signaling Explanation
- 08003 De BEAUFORT Viviane**  
D'un effet vertueux de l'art. 116 de la loi NRE en matière de RSE ? La problématique est posée à échelle de l'Union européenne
- 08004 MATHE Hervé**  
Greater Space means more Service: Leveraging the Innovative Power of Architecture and Design
- 08005 MATHE Hervé**  
Leading in Service Innovation: Three perspectives on Service Value delivery in a European Context

- 08006 ROMANIUK Katarzyna, VRANCEANU Radu**  
Asset Prices and Asymmetries in the Fed's Interest Rate Rule: A Financial Approach
- 08007 MOTTIS Nicolas, WALTON Peter**  
Measuring Research Output across Borders - A Comment
- 08008 NAPPI-CHOULET Ingrid, MAURY Tristan-Pierre**  
A Spatiotemporal Autoregressive Price index for the Paris Office Property Market
- 08009 METIU Anca, OBODARU Otilia**  
Women's professional Identity Formation in the Free/Open Source Software Community
- 08010 SIBIEUDE Thierry, VIDAL Rodolphe**  
Le programme « Une grande école : pourquoi pas moi ? ® ». D'une action de responsabilité soc\_iale de l'ESSEC à la responsabilité sociétale des grandes écoles françaises
- 08011 SIBIEUDE Thierry, VIDAL Rodolphe**  
Enjeux et perspectives du sociétariat des groupes mutualistes complexes face aux stratégies de développement à l'échelle groupe : quelques enseignements du cas du groupeMACIF
- 08012 FOURCANS André, VRANCEANU Radu**  
Money in the Inflation Equation: the Euro Area Evidence
- 08013 CAZAVAN-JENY Anne, JEANJEAN Thomas**  
Supply and Demand for European Accounting Research. Evidence from EAA Congresses
- 08014 FAYARD Anne-Laure, METIU Anca**  
Beyond Orality and Literacy: Letters and Organizational Communication
- 08015 CAZAVAN-JENY Anne, MISSONIER-PIERA Franck, MARGAINE J.**  
CEO Compensations in a Stakeholders' Regime: An Empirical Investigation With French Listed Companies
- 08016 METIU Anca, FAYARD Anne-Laure**  
Letters and Scientific Communities
- 08017 BESANCENOT Damien, VRANCEANU Radu**  
Migratory Policy in Developing Countries: How to Bring Best People Back?
- 08018 BESANCENOT Damien, VRANCEANU Radu**  
Financial Distress and Bank's Communication Policy in Crisis Time
- 08019 AGID Philippe, TARONDEAU Jean-Claude**  
Les performances des maisons d'Opéra : une explication statistique

## **2009**

- 09001 POTIN Jacques**  
The Selection Effect of Two-way Trade in the Melitz Model: An Alternative Approach
- 09002 NAIDITCH Claire, VRANCEANU Radu**  
Migratory Equilibria with Invested Remittances
- 09003 BARONI Michel, BARTHELEMY Fabrice, MOKRANE Mahdi**  
A Repeat Sales Index Robust to Small Datasets
- 09004 NAPPI-CHOULET Ingrid, MAURY Tristan-Pierre**  
A Spatial and Temporal Autoregressive Local Estimation for the Paris Housing Market

Pour tous renseignements :

- **Centre de Recherche/Research Center**

Tél. 33 (0)1 34 43 30 91  
[research.center@essec.fr](mailto:research.center@essec.fr)

- **Visitez notre site**

**[www.essec.fr](http://www.essec.fr)**

ESSEC BUSINESS SCHOOL PARIS  
AVENUE BERNARD HIRSCH - BP 50105 CERGY  
95021 CERGY-PONTOISE CEDEX - FRANCE  
TÉL. +33 (0)1 34 43 30 00 - FAX +33 (0)1 34 43 30 01  
[www.essec.fr](http://www.essec.fr)

ESSEC EXECUTIVE EDUCATION  
CNIT - BP 230  
92053 PARIS LA DÉFENSE - FRANCE  
TÉL. +33 (0)1 46 92 49 00 - FAX +33 (0)1 46 92 49 90  
<http://formation.essec.fr>

ESSEC BUSINESS SCHOOL, SINGAPORE CAMPUS  
100 VICTORIA STREET - NATIONAL LIBRARY BUILDING #13-02  
SINGAPORE 188064  
TÉL. +65 6884 9780 - FAX +65 6884 9781  
[www.essec.edu](http://www.essec.edu)

